

BANGARRA DANCE THEATRE



TERRAIN

TECHNICAL SPECIFICATIONS International 2024

For further technical enquiries please contact:

*Director of Technical & Production
Production Manager*

*John Colvin
Cat Studley*

*+61 417 221 142
+61 415 206 156*

*john@bangarra.com.au
cat@bangarra.com.au*

*Wharf 4/5 Hickson Road,
Walsh Bay, NSW, 2000
+61 2 9251 5333
www.bangarra.com.au*

TOURING TECHNICAL SPECIFICATIONS

Artistic Team:

Choreographer:	Frances Rings
Composer:	David Page
Set Designer:	Jacob Nash
Costume Designer:	Jennifer Irwin
Lighting Designer:	Karen Norris

Touring Party (32 TBC):

Duration

60 minutes no interval

Synopsis

The timeless wonder and spiritual resonance of Lake Eyre

Described as a hymn to country, TERRAIN transports us to Lake Eyre the place of Australia's inland sea: one of the few untouched natural waterways in the world. Bangarra explores the relationship of Indigenous people to country and how landscape becomes a second skin.

Beyond the ancient vastness we travel through drought and deluge, we witness the ephemeral transformation of place where nature delivers in abundance, promises all but guarantees nothing.

Stage Requirements

- The work is performed on a white dance floor (Harlequin Rev / Pro) in a white box.

Our recommended ideal stage space:	12metres (wide) by 12metres (deep)
Ideal Proscenium Opening:	12m wide x 6.5m high
Crossover space:	on stage level upstage (not included in stage depth) or behind back curtain.
Minimum wing space:	approx 50sqm by 4m (high)
Recommended grid height:	18m

Preparing the theatre prior to Bump In

The presenter is required to complete a pre-rig prior to the bump in commencing.

The pre-rig will include:

- Hanging and installing all venue supplied lighting equipment including cabling, patching, colour and ensuring all equipment is in good working order
- Installing all venue supplied sound equipment including cabling, patching and ensuring all equipment is in good working order
- Hanging of all venue provided soft goods according to the hanging plot provided
- Installation of the Production desk into the auditorium

Risk Assessment

Bangarra Dance Theatre has Risk Assessment documentation available upon request.

Freight

When touring within Australia, Bangarra travels within a 48ft semi-trailer with a belly box that will need to be accessed during bump ins/outs – while touring internationally freight will be dependent on presenting companies and items supplied by BDT. Please advise us of any difficulties associated while entering your loading area with a trailer.

Production Schedule

A sample Production schedule is at the end of this document. This is a sample only and a venue specific schedule will be sent closer to the seasons. Please see the venue specific production schedule for details of the bump in, season, bump out and crew requirements. Any enquiries can be made to the Director Technical & Production, John Colvin, email: john@bangarra.com.au, mobile: (+61) 417 221 142 or Production Manager, Cat Studley, email: cat@bangarra.com.au, mobile: (+61) 415 206 156.

Venue Show Crew required

- 1 x Venue Electrician/ Lighting Board Op.
- 2 x Venue Mechanists
- 1 x Sound Supervisor
- 1 x Costume Maintenance person (during day only)

Warm up Class

A rehearsal space is required for at least the first two days of bump in. If you do not have a rehearsal space available or on site, please advise us ASAP so that we can make suitable alternate arrangements. Rehearsal room should be a minimum of 12m x 12m with a vinyl dance floor laid (venue supplied) and a sound system available.

After the opening night performance, on all subsequent performance days the company need access to the stage five hours prior to each performance for a warmup dance class. This class can be done in work light and venue crew are not required. An alternate offstage space will be required for warm-up class and stretching if the stage is unavailable.

Laundry access

On performance only day(s) we will need access to the laundry during the day and until 11.00pm.

Elements supplied by Bangarra Dance Theatre

Set

- Black Smother: 14m x 8m, no fullness
- White plastic cyclorama: 16m x 8m
- 6 x soft legs to be used as pan masking
- 8 rolls of black tarkett dance floor: Each roll is 2m wide x 12m long and weighs approx 80kgs
- 8 rolls of white tarkett dance floor: Each roll is 2m wide x 12.5m long and weighs approx 50kgs
- Hard legs x 8 (4 pairs) (White molten on timber) 6m x 2m, positioned on floor with a French brace and sandbags.
- 4 x White/black molton borders 16m x 3m (tied onto same line)
- White filled cotton cloth: 16m x 7m
- Spinifex cloth: PVC cloth with scenic treatment 16m x 7m
- Salt cloth: Nessel canvas cloth with scenic treatment 16m x 7m
- Scar cloth: Nessel canvas cloth with scenic treatment 16m x 7m
- Landform cloth: Nessel canvas cloth with scenic treatment 16m x 7m
- Reflect cloth: Nessel canvas cloth with scenic treatment 16m x 7m
- A fly plot will be provided by Bangarra Dance Theatre before bump in commences.

NB

- Please see the plans, section, hanging plot, and risk assessment documents for further safety and structural details on these elements.
- Depending on venue size and time frames Bangarra Dance Theatre may occasionally not install all set pieces.
- Weight of scenic elements can be supplied on request.
- Bangarra will provide tailpipes for all touring cloths.

Props

- Various hand props including Shields
- Body Paint, ochre/ gapan, and chalk

Lighting

Bangarra will tour the following lighting equipment (or a variation) as below:

- 16 x Colourset scrollers inc. PSU (to be attached to venue PAR64)
- ETC Gio@5 Lighting Console and Pathport Ethernet Node. BDT HLX will program, Venue LX to operate from the toured ETC Gio lighting console unless the venue has an ETC Eos family console available.

Sound supplied by Bangarra

- 2x Radio microphones (2x Shure BLXR HH's)
- Allen & Heath SQ5 Sound console and AR84 Stage rack
- Playback system – Dual Mac mini system (Main & Redundant) via Dante
- On stage feed for QLab system – at SMD
- Touring on stage infrared camera system
- System Output from SQ System: (6ch): Left, Right, Centre, Sub, PS Foldback, OP Foldback

Road cases (approx. number)

- 5 x Stage Management
- 4 x Mechanist
- 3 x Costume/ Wardrobe
- 1 x Body paint
- 3 x Dancer's rehearsal gear/ Exercise equipment
- 1 x Green Room
- 6 x Lighting
- 2 x Sound/ AV

Dance Floor Cleaning equipment

- Vinegar and hot water will be used when mopping the dance floor. No other cleaning products to be used on the dance floor.
- Handheld electric scrubber
- Towels, brooms, buckets, scissor broom.

Laundry equipment

- 1 Ironing board
- 1 x Bernina Sewing machine
- 1 x Juki overlocker
- 1 x Philips steam iron
- 15 x Washing baskets
- Washing powder & detergents
- Towels

Technical Requirements to be supplied by the venue:

Set

Remove all venue cloths as required.

Lighting Equipment

The theatre will be provided with a 1:25 lighting plan, full colour call and lamp list no less than two weeks prior to the bump-in. Please see the lighting plan for the details of the lamp list.

Venue Requirements include:

- All lighting is to be rigged, coloured, patched and tested prior to the company's arrival at the theatre, unless otherwise scheduled in consultation with Bangarra Dance Theatre production manager.
- At least 180 dimmers (10amp- 2.4KW)
- At least 6 Hot Powers (10amp- 2.4KW)
- Stage work light and appropriate backstage blues/ desk lamps
- Centre spotting light (red) from under balcony/ rear of auditorium

LX Gear required:

- 8 x Sidelight Booms pre-rigged with Source Fours and 110v PAR 64's (BDT to supply scrollers)
- 92 x Source 4 750w 26
- 15 x Source 4 750w 19
- 29 x 1.2kW Fresnels
- 18 x 2kW Fresnels
- 20 x Source 4 Lustr S2 36
- 11 x Source 4 Lustr S2 CYC
- 6 x Martin Mac Viper performance
- 2 x Collider FC strobe
- 8 x PAR64 110V NSP
- 8 X PAR64 110V MFL
- 12 x PAR36 ACL
- 8 x CODA 500/4
- 2 x Unique 2.1 Hazer
- 1 x MDG ATMe Hazer

N.B Bangarra's TERRAIN will use theatrical haze. MSDS available with Risk Assessment

Sound Requirements

- We require the following from the house system:
- All elements of the system must be tested and in working order prior to bump in day. The System should be suitable for the room and capable of high SPL with appropriate delays and EQ for the room and limiter preset. The Bangarra soundtrack is often loud with stereo effects and will utilize the system to its capacity, especially with regards to subwoofers.
- Please remove any unnecessary items from around the subs and check the venue for any items that rattle (such as aircon vents, unused lighting fixtures, etc.)
- Independent control of All FOH and Stage sends (L, R, C, Sub, Front Fill, Delays, DS OP FB, US OP FB, DS PS FB, US PS FB)
- Front Fill and Delays should be fed from Main Left and Right, if possible, with the appropriate level, delays, and EQ for the room. Level's may need to be adjusted.
- 4 x onstage monitor speakers. If possible, it would be preferred to fly them above the 1st and 3rd touring booms. If this is not possible, they may be put on the floor behind the LX Booms. We ask that all cable be off the floor and dropped from above where possible. We may also require an extra 2 monitors further downstage if coverage and level is not as desired. Always check first before installing, as the dancer's safety is the first priority with regards to monitor placement.
- Pink noise and all systems checks to be completed before every show without exception
- 2x Direct Cat5/Cat6 patching from stage (SMD) to Audio Control position (1x Network & 1x A&H System Network)
- 1x Direct Cat5/Cat6 patching from Production Desk to Audio Control position
- 2x Direct Cat5/Cat6 patching from AV land to Audio control position (Main and Backup)
- 2x Handheld radio microphones will be required at the Production desk for rehearsals and available for on stage notes, Welcome to Country and Q&A's if required. Please advise if Radio HH's are unavailable and we will use our own.
- A Microphone at Stage Manager Desk that is always on (with on/off switch) for emergency and preshow announcements.

Headset/ Talkback Communication

- The use of wireless radio communication system with 6 packs (Bangarra Head Mech, Bangarra Floor LX, Bangarra PM, Bangarra ASM, Fly crew x 2)
- Wired comms are required in the following areas:
 - Prompt corner x 1 (Stage manager)
 - LX operator x 1
 - Sound operator x 1
 - In addition, 3 extra headsets at production desk in auditorium are required during plotting and rehearsal sessions.
- A CCTV at prompt corner (fixed position camera in auditorium with full view of stage) and an infra-red monitor.
- Stage management paging to dressing rooms and all other backstage areas from prompt corner.
- Audio program/show relay to dressing rooms.
- Centre spotting light (red) from under balcony/ rear of auditorium.

Production Desk

- Production desk in auditorium for bump-in and lighting plot with lighting control desk, signal cable (2 universes of DMX) and a desk lamp. As well as suitable talkback headsets for communication.

Laundry requirements

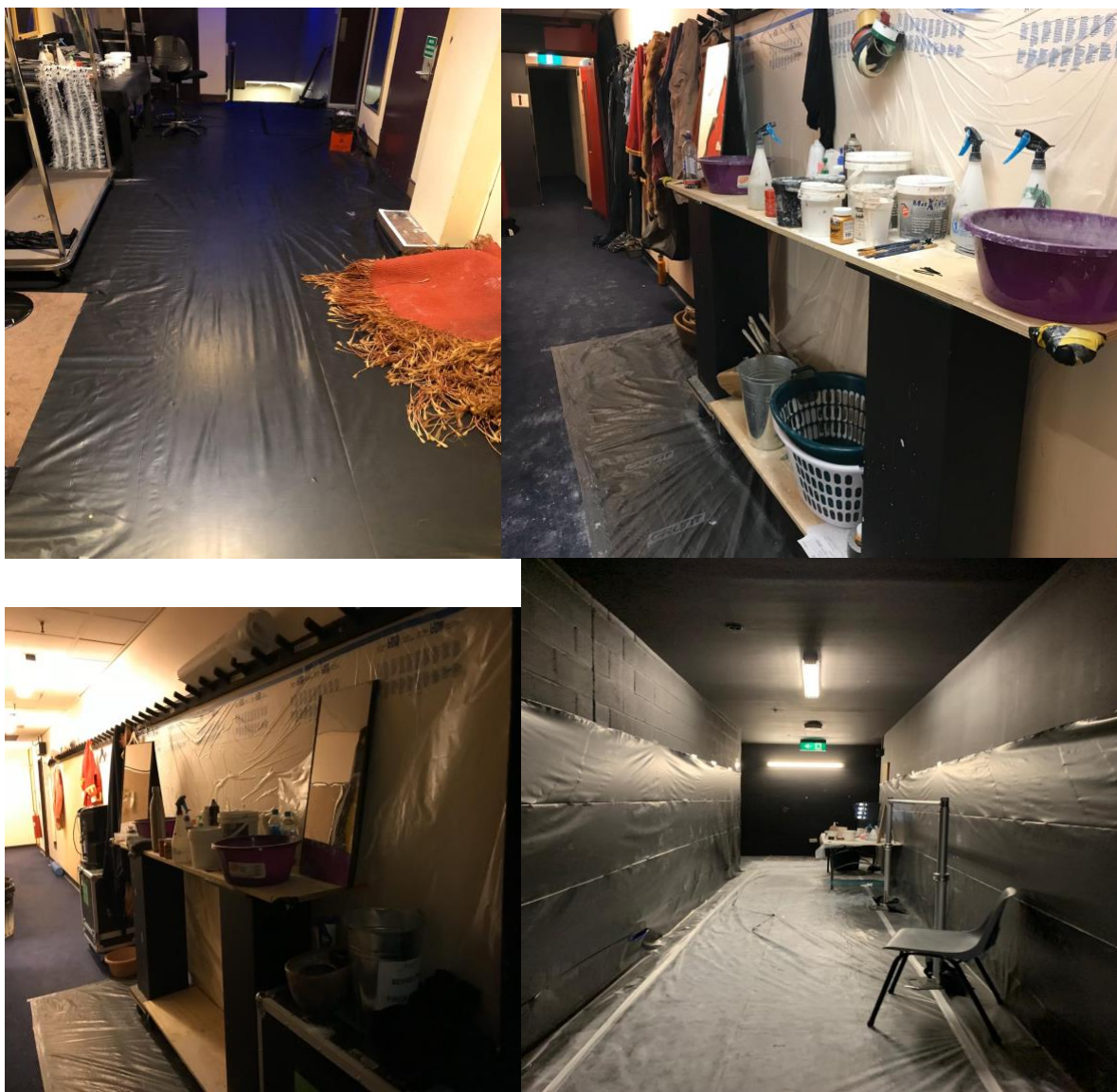
- 2 x industrial washing machine
- 2 x industrial dryer
- Drying cupboard
- 1 x Iron and ironing board
- 4 x wardrobe racks or hanging areas for drying
- Deep sink
- 1 Wardrobe maintenance staff member to assist in laundering and setting up for Bump-in, morning/day shift for evening performance days (minimum 4 hours). On 2 show days to assist in laundry between matinee and evening performance.

Backstage

- 4 x Portable wardrobe racks (sturdy)
- 2 x large props tables
- 2 x Portable mirrors (full length)
- Wide brooms x 2 and collection tray
- 2-4 x Mops and Mop buckets to clean venue floor (No cleaning products to have been used on mops or in mop buckets)
- Water cooler backstage or bottled water to be provided.

Backstage Cross over

The backstage cross over area (if large enough) should have 2 x wardrobe racks, 2 x tables covered in plastic for paint up, 2 x table for props. If this area is carpeted, or at the venue's discretion, plastic or carpet runners should be laid on the floor and walls.



Typical backstage area set up (note tables, costume racks, plastic on floor and walls as required)

Quick Change Areas -TBC

Two designated quick-change areas, (approx 1.2m x 1.8m) one on either side of the stage, are required for dancers to change in private – if cross over area not big enough. These areas should be equipped with a full-length mirror, small table covered in plastic, wardrobe rack and suitable lighting. Please confirm with Bangarra before installing.

Body Paint

Body paint is used during the performance. Bangarra requires that one dressing room closest to the stage is laid with heavy duty plastic on the floor, walls to shoulder height and all bench surfaces to protect the room. This will be done on day 1 of the bump in, or prior to arrival. It is also advisable to lay carpet runners or plastic over any carpeted areas leading from the dressing room to the stage as this is a high traffic area, or areas that you do not wish to be exposed to body paint. It is preferable if the allocated dressing room is at least a 4-person room with a sink and a shower. Extra cleaning of shower stalls may be required after departure.



Typical Paint up room (note: plastic on floor, walls and benches)

Dance Floor

The Bangarra Head Mechanist will oversee the pre-show and post show cleaning of the stage. Due to the nature of the materials used in the show, it is usually necessary to use an industrial wet mop with hot water, followed by another 1 or 2 hot mops of the stage. Spot cleaning with scrubbers may also be required. At the end of each performance, the walk behind Scrubber may be used. There are specific mops designated for the cleaning of the tarkett and these must not be used for any other purpose. Please consult the Bangarra Head Mechanist before using any products on the tarkett surface to avoid damage

Dressing room facilities

All dressing rooms must be cleaned prior to Bangarra Dance Theatre's arrival and will need to be cleaned after each performance.

All dressing rooms must be equipped with toilets, sinks, hot & cold running water and showers. Due to the large amounts of body paint used by dancers in performance, we require at least 4 showers backstage. Ideally, we require:

- 2 x large dressing rooms (6-20 people)
- 2 x small dressing rooms (2-4 people)

Production Office facilities

We will also require a production office with access to at least one telephone and high-speed Internet connection for 7 – 10 users.

Green Room

We will require the use of a Green Room, with the following basic facilities: kettle or boiling water unit, sink, microwave (for heat packs), and fridge with a freezer (for ice packs). We will also require access to an ice machine for dancers to use for ice baths. Please advise us before our arrival if this is not possible, as ice and heat packs are required for the dancers before during and after each rehearsal and performance.

Venue Access

Venue to inform touring company of access procedures for all company members. I.E Passes, codes, keys.

Date	Activity	Venue Crew Numbers	Venue Crew Hours	Notes
Day Prior Company Travel/ Pre-rig as discussed				
Day 1 Bump in				
8:00am - 12:00pm	Unpack truck, install set pieces, install touring LX, install sound	4 MX, 4 LX, 1 SD, 1 WD	40	All MX & LX required for truck unpack
12:00pm - 1:00pm	Lunch/ SND Quiet time	1 SD	1	
1:00pm - 5:00pm	Continue boom install, continue set install, set masking, install sound, LX focus when ready, (sound break first hour)	4 MX, 4 LX, 1 SD, 1 WD	40	
5:00pm - 6:00pm	Dinner/ SND Quiet time		1	
6:00pm- 11:00pm	LX Focus	4 LX	20	
6:00pm - 10:00pm	MX to finish due to early morning next day	2 MX	8	
		Day Total Crew Hours:	110	

Day 2	Bump in/ Performance #1			
8:00am – 9:30am	Lay Dance Floor	4 MX	6	
9:30am - 1:00pm	LX Focus and Plot / Backstage Trouble Shoot	4 MX, 4 LX,	28	
1:00pm – 2:00pm	Crew Lunch / Sound quiet time		1	
2:00pm – 5:00pm	LX Plot, Fly Plot and set for tech	2 MX, 1 LX, 1 SND	12	
5pm – 6pm	Crew dinner			
6pm – 6:15pm	Venue induction			
6:15pm – 10pm	Spacing / Technical rehearsal	2 MX, 1 LX, 1 SND	20	

10pm – 11pm	Tech fix ups as required			
			Day Total Crew Hours:	67

Day 3	Bump in/ Performance #1			
9:00am - 12:00pm	Tech fix ups as required	2 MX, 1 LX, 1 x SD	12	Bangarra personnel operate both LX & SD consoles
11:30am - 1:00pm	Crew Lunch / Class on Stage			
1:00pm - 1:30pm	Dancers Break / Set for spacing	2 MX, 1 LX, 1 SND	18	
1:30pm - 5:00pm	Spacing / Technical rehearsal			
5:00pm - 5:30pm	Set for show			
5:00pm - 6:15pm	Dancer Dinner			
5:30pm - 6:30pm	Crew Dinner			
6:15pm - 6:40pm	Dancers Warm up onstage			
6:30pm – 9:30/ 10:00pm	Show Crew Call	2 MX, 1 LX, 1 SND	16.5	
6:55pm	Half-Hour Call			
7:00pm	House Open			
7:30pm – 9:00pm	Performance #1			
9:30pm	LX and Sound finish			10 min allowance for house going up late/ speeches/ curtain call, etc.
9:00pm – 10:00pm	Post show floor clean			
10:00pm	MX finish			
10:30pm	Wardrobe finish/ Crew finish			
		Day Total Crew Hours:	46.5	
Day 4	Performance 2/ Bump out			
9:00am	Laundry Open	1 x Wardrobe Staff	4	

1:00pm	Backstage access for treatments			
2:00pm – 5:00pm	Dancers Class	At Venue discretion	At Venue discretion	
3:00pm – 5:00pm	Notes onstage	2 x MX, 1 x LX, 1 x SD	12	
5:00pm - 6:00pm	Dancers Dinner			
6:00pm – 6:30pm	Crew Dinner			
6:00pm – 6:40pm	Dancer Class onstage			
6:30pm	Show Crew Call	2 x MX, 1 x LX 1 x SD	10	
6:55pm	Half-Hour Call			
7:30pm – 9:00pm	Performance #2			
9:00pm	Truck arrives (if not already parked at dock)			
9:00pm – 1:30am	Bump out	4 MX, 4 LX, 1 SD, 1 x WD	49.5	
				All MX & LX required for truck pack
		Day Total Crew Hours:	75.5	
		Production Total Crew Hours:	308	
Day After Company Travel or Day Off				

Please note this is a sample only – Venue specific Production Schedule to be supplied.